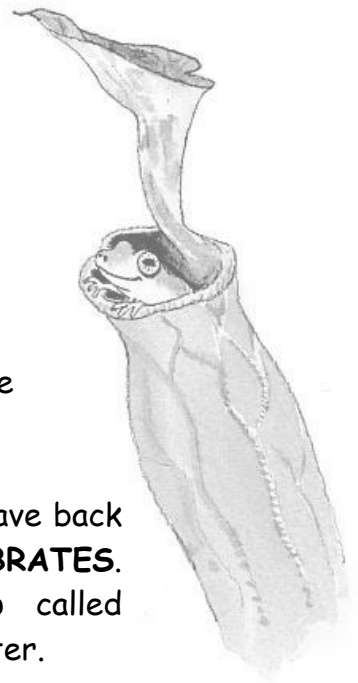


# The Animal Kingdom in the Rainforest

There are millions of different species of animals and insects that live in the rainforests. Here we have some tree frogs.



Some tree frogs are very brightly coloured, and others are poisonous. Rainforest people use the poison to make hunting spears.



Animals can be classified into two main groups - whether they have back bones, the **VERTEBRATES**, or no back bones, the **INVERTEBRATES**. Frogs are vertebrates. They belong to a smaller group called **AMPHIBIANS**. This means that they live on land but breed in water.

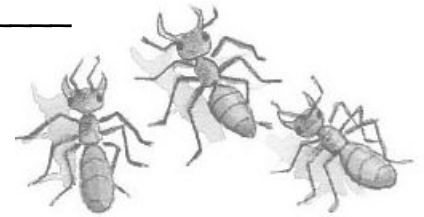
Here are some other classifications for different types of vertebrates. We have given you one example of an animal in that group, can you give two more?

**BIRDS** (e.g. parrot) \_\_\_\_\_

**REPTILES** (e.g. snake) \_\_\_\_\_

**FISH** (e.g. cod) \_\_\_\_\_

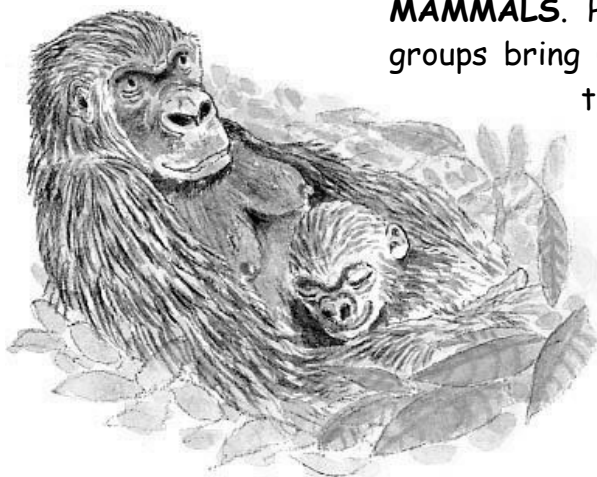
Here we have some ants. Which group are they in?



**Mammals / Birds / Insects / Reptiles**

Did you know ants live in colonies of up to 700,000 members? Each ant has his own job. There are small ants that tend to the nest, larger leaf-cutter ants which prepare the food for the colony, and then great big army ants that protect the colony from predators.

Look! Here is a baby monkey with his mother. Monkeys, like humans, are **MAMMALS**. Here are some facts about how different animal groups bring up their babies. Circle whether you think each of the statements is true or false:



**MAMMALS** give birth to live babies that they care for when they are young: TRUE / FALSE

**BIRDS** lay eggs, from which their babies hatch: TRUE / FALSE

**FISH** lay eggs on land: TRUE / FALSE